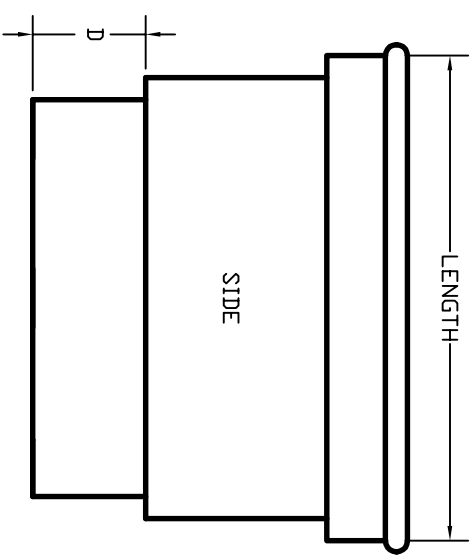
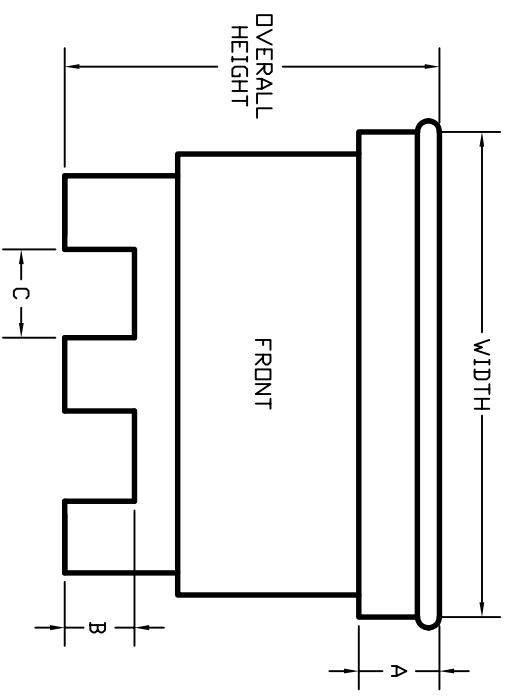


# CONTOUR – BOTTOM CONTAINER



**NOTE:**  
 DIMENSIONS MAY VARY UP TO A MAXIMUM OF 0.5 AN INCH  
 INSIDE WIDTH'S AND LENGTH'S MEASURED FROM INSIDE OF BOTTOM  
 VOLUMES ARE ALL +/- SL.

PRODUCT NUMBER	OVERALL HEIGHT	INSIDE HEIGHT	WIDTH	INSIDE WIDTH	LENGTH	INSIDE LENGTH	A	B	C	D	VOLUME (LITERS)
<b>FPC2721</b>	<b>31</b>	<b>25</b>	<b>46.75</b>	<b>39</b>	<b>45</b>	<b>37.5</b>	<b>4</b>	<b>6.5</b>	<b>11.75</b>	<b>13.25</b>	<b>645</b>
FPC2722	36	30.375	44.625	38	46.75	39	9.25	6.5	11.75	13.25	866
FPC2723	42	35.75	45	38	46.625	39.5	15	6.5	11.75	13.25	1,037
FPC2724	45	39	45.125	37	46.625	39	18.25	6.5	11.75	13.25	1,155
FPC2725	55	46.5	45	37.5	46.25	39.5	26	6.5	11.75	13.25	1,414

D&M PLASTICS INC.